

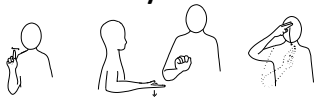


The Link Nursing & Care Agency Ltd., Pondwick House, Lutterworth Close, Bracknell, Berks RG42 2NW
Tel: 01344 488 155 Fax: 01344 303 669 www.linknursing.com email@linknursing.com

ABOUT YOUR SUPPORT WITH THE LINK NURSING & CARE AGENCY



What is your Name?



Do you feel you were involved in putting your Care Plan together?.....



Are you happy with your Care Plan?



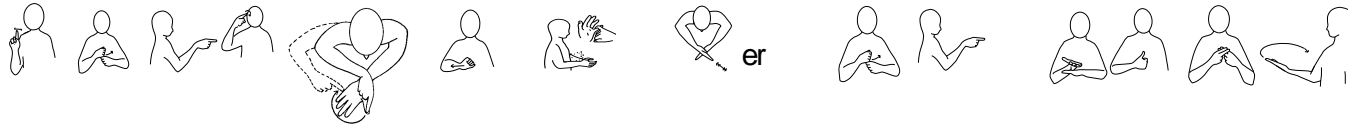
Do we meet the needs in your Care Plan?





The Link Nursing & Care Agency Ltd., Pondwick House, Lutterworth Close, Bracknell, Berks RG42 2NW
Tel: 01344 488 155 Fax: 01344 303 669 www.linknursing.com email@linknursing.com

What do you think about your support worker/s? Do you get on well with them?



Do you choose who supports you?.....



Are you happy with how they support you?.....



No, why?.....



.....



The Link Nursing & Care Agency Ltd., Pondwick House, Lutterworth Close, Bracknell, Berks RG42 2NW
Tel: 01344 488 155 Fax: 01344 303 669 www.linknursing.com email@linknursing.com

Do our staff carry and show you their ID badge?



Do they arrive on time?.....



Do they leave on time?.....



Do they do a good job?.....



Do they speak about personal things and people that you do not know?.....



Do they always come to see you and support you?.....





The Link Nursing & Care Agency Ltd., Pondwick House, Lutterworth Close, Bracknell, Berks RG42 2NW
Tel: 01344 488 155 Fax: 01344 303 669 www.linknursing.com email@linknursing.com

Do you know what to do if your support worker does not arrive?.....



Are you happy with the hours you are supported?.....



No, When do you want us to come in?.....



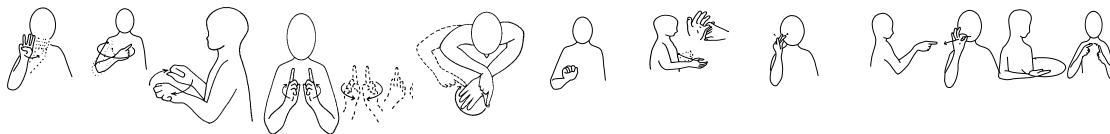
Are you happy with the activities during your support?.....



No, what would you like to do?.....



Will we change things about your support when you ask us to?



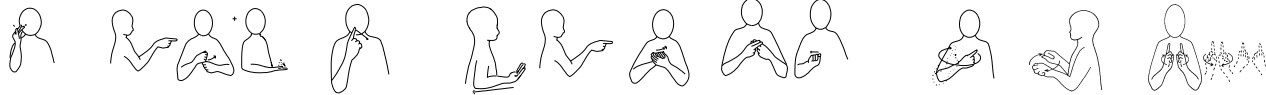


The Link Nursing & Care Agency Ltd., Pondwick House, Lutterworth Close, Bracknell, Berks RG42 2NW
Tel: 01344 488 155 Fax: 01344 303 669 www.linknursing.com email@linknursing.com

Do you know how to let us know you are not happy?.....



When you did complain were you happy with the way we changed things?



When you call us do you get through?



Do we understand what you need to have a good support?



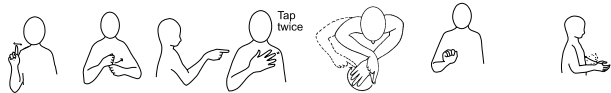


The Link Nursing & Care Agency Ltd., Pondwick House, Lutterworth Close, Bracknell, Berks RG42 2NW
Tel: 01344 488 155 Fax: 01344 303 669 www.linknursing.com email@linknursing.com

What do we do well?.....



What do you like about your support?



What would you like to change?



Did someone help you today with this form?



Is there anything else you would like to speak to us about?.....

